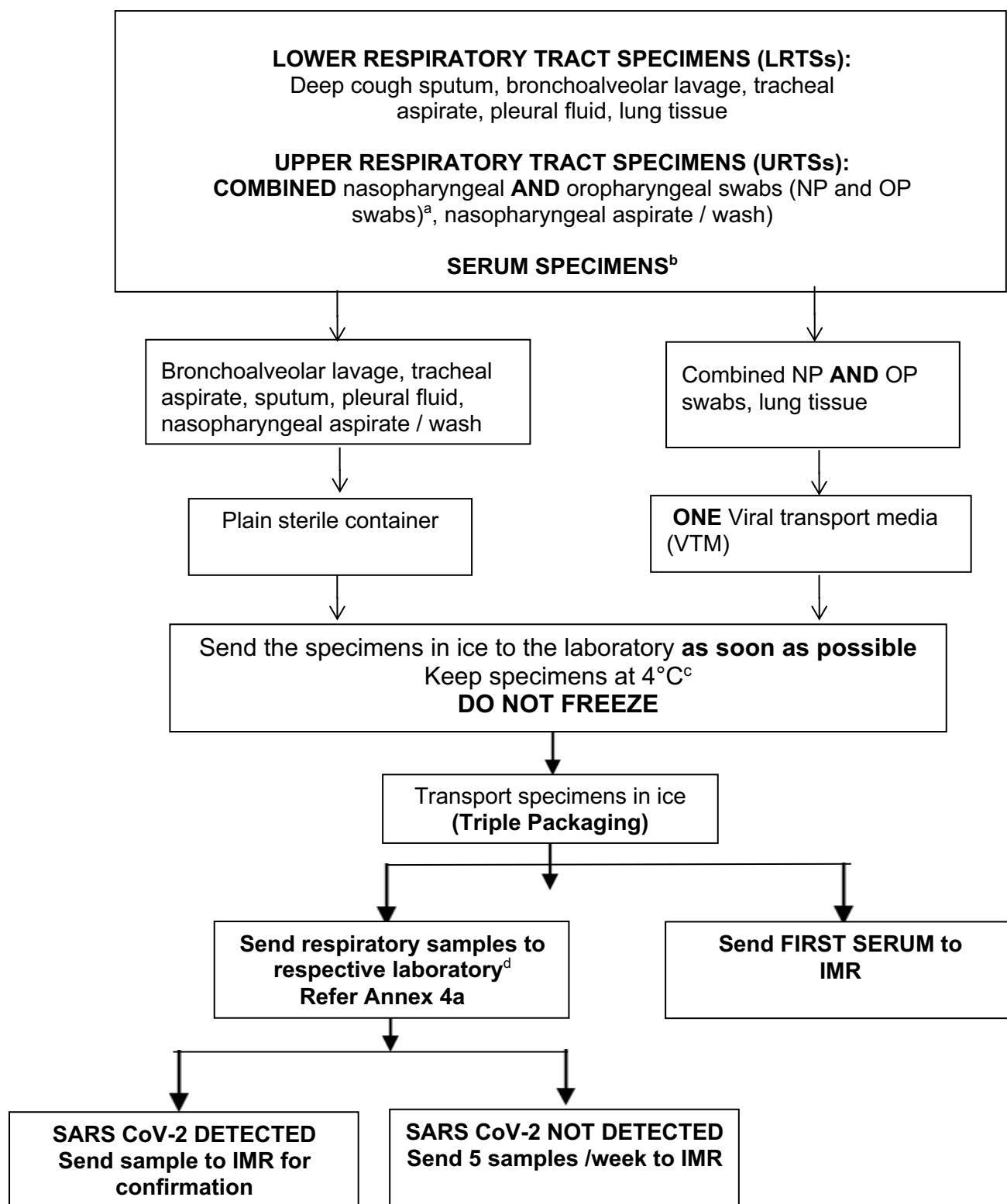


LABORATORY TESTING FOR PUI OF COVID-19 IN HOSPITAL

**NOTE:**

^aDo not use wooden shaft / cotton swab. Use dacron / rayon / polyester swabs.

^bSerum sample to be collected in serum separator tube and send to IMR.

^cAll clinical sample while awaiting to be send to the laboratory

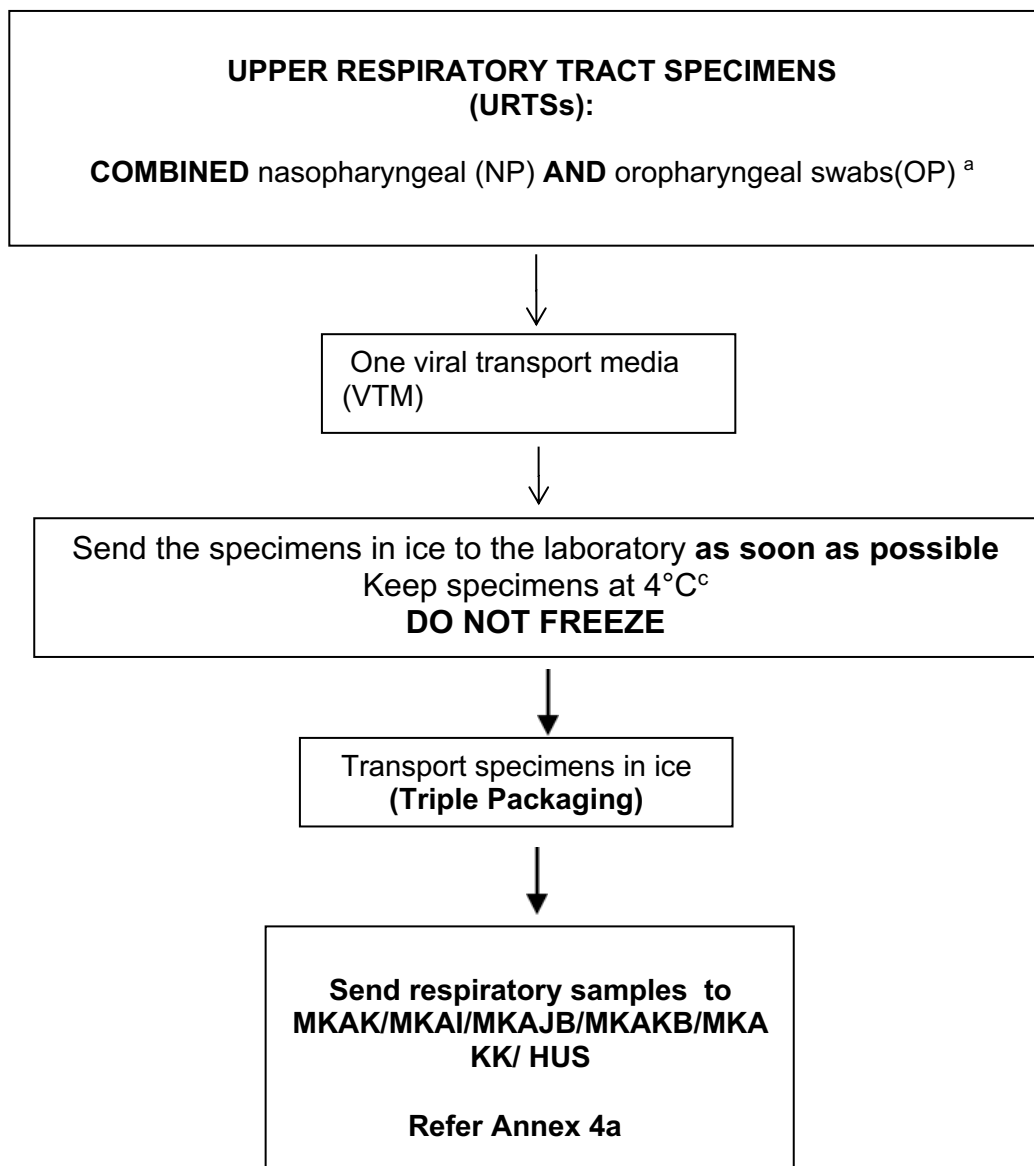
> If transportation of sample is within 72 hours, store at 2-8°C

> If transportation of sample is after 72 hours, store at -80°C

^dConsult with Laboratory Officers first before sending samples.

PLEASE SEND SECOND SERUM TO IMR ON DAY 13 OR PRIOR TO DISCHARGE

LABORATORY TESTING FOR ASYMPTOMATIC CONTACTS OF COVID-19

**NOTE:**

^aDo not use wooden shaft / cotton swab. Use dacron / rayon / polyester swabs.

^cAll clinical sample while awaiting to be send to the laboratory

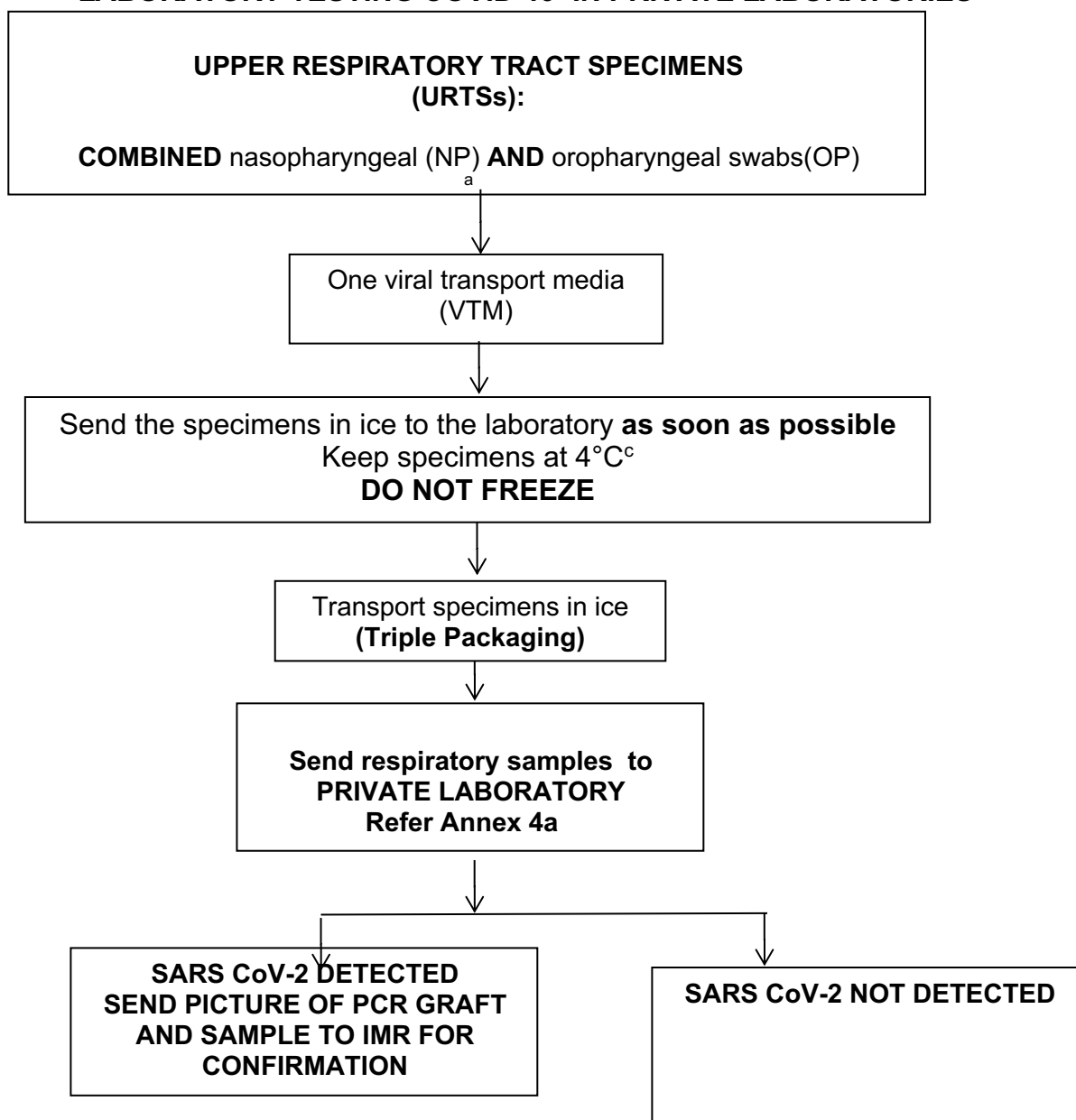
➤ If transportation of sample is within 72 hours, store at 2-8°C

➤ If transportation of sample is after 72 hours, store at -80°C

^dConsult with Laboratory Officers first before sending samples.

**PLEASE PERFORM RTK SEROLOGY IGM ON DAY 13
(SECOND SAMPLE TESTING)**

LABORATORY TESTING COVID-19 IN PRIVATE LABORATORIES



NOTE:

^aDo not use wooden shaft / cotton swab. Use dacron / rayon / polyester swabs.

^cAll clinical sample while awaiting to be send to the laboratory

➤ If transportation of sample is within 72 hours, store at 2-8°C

➤ If transportation of sample is after 72 hours, store at -80°C

^dConsult with Laboratory Officers first before sending samples.

